

The Jeremy Winston Chorale

# TRAVEL TO FRANCE & PRAGUE SUMMER 2023





The Jeremy Winston Chorale

Take advantage of an eleven-day tour of major European cities this summer. Visiting some of Europe's most historic and celebrated cities, you and a friend can spend eleven (11) days immersed in the culture and lifestyle of Western Europe. Traveling with the world-renown Jeremy Winston Chorale, you will be joined on portions of your trip by this ensemble and treated to many evenings of beautiful music.

Your payment of \$2,500 will cover all flights and transportation costs and hotels. Plus this will include a guided tour in Paris and free admission to all Jeremy Winston Chorale concerts.

### **First Leg - 4 Days**

#### **Collonges, France (June 15 - 17)**

**Collonges** is a commune in the Ain department in the Auvergne-Rhône-Alpes region in Eastern France. In 2018, it had a population of 2,222. Collonges is located on the border with the Haute-Savoie department, just northeast of Fort l'Écluse in Léaz, Ain. It is also situated 20 km (12.4 mi) southwest of Geneva, Switzerland.

### **Second Leg - 3 Days**

#### **Paris, France (June 17 - June 20)**

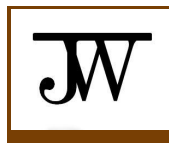
Paris, France's capital, is a major European city and a global center for art, fashion, gastronomy and culture. Its 19th-century cityscape is crisscrossed by wide boulevards and the River Seine. Beyond such landmarks as the Eiffel Tower and the 12th-century, Gothic Notre-Dame cathedral, the city is known for its cafe culture and designer boutiques along the Rue du Faubourg Saint-Honoré.



### **Third Leg - 6 Days**

#### **Prague, Czech Republic (June 20 - 25)**

Prague, capital city of the Czech Republic, is bisected by the Vltava River. Nicknamed "the City of a Hundred Spires," it's known for its Old Town Square, the heart of its historic core, with colorful baroque buildings, Gothic churches and the medieval Astronomical Clock, which gives an animated hourly show. Completed in 1402, pedestrian Charles Bridge is lined with statues of Catholic saints.



The Jeremy Winston Chorale



## **PERFORMANCE OPPORTUNITIES**

### **Saturday, June 17th.**

ADVENTIST UNIVERSITY OF FRANCE - CAMPUS ADVENTISTE DU SALEVE -  
COLLONGES

### **Sunday, June 25th**

PRAGUE PROMS WITH CZECH NATIONAL SYMPHONY ORCHESTRA

### **June 21 - 24: CLASSES WITH PROFESSIONAL MUSICIANS**

- Voice
- Instruments (Orchestral)
- Piano

---

## **TRAVEL DATES**

Thursday, June 15, 2023 to Monday, June 26, 2023

---

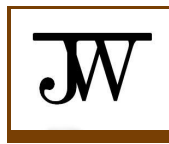
## **PACKAGE COSTS**

**\$2,800.00 USD per person (tax included)**

- 33% due by close of business Wednesday, March 15,
- 33% due by close of business Wednesday, April 19
- 34% due by close of business Monday, May 15

## **TRAVEL PACKAGE INCLUDES**

- Round-Trip Airfare
- Hotel Lodging (2 person occupancy maximum)
- Transportation to and from all European airports
- Daily Breakfast



## The Jeremy Winston Chorale

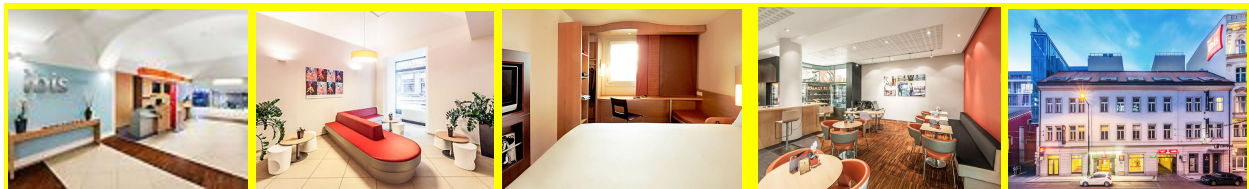
U.S. Departure cities will be based on each traveler's closest international airport and cost. In the event that no airport in reasonable driving distance has affordable ticket prices the travel package price may increase. U.S. Departure city will be returning city. Travel to and from the U.S. airport must be provided by each traveler.

### **PAYMENT OPTIONS**

- Checks made payable to **JEREMY WINSTON CHORALE**  
(put European Tour in Memo Line)
- Credit Card
- Paypal - [jeremy@jeremywinstonchorale.com](mailto:jeremy@jeremywinstonchorale.com)
- Cash

### **TRAVEL INFORMATION**

- Each traveler must provide a scanned copy of his or her passport when confirmed.
- Travelers are recommended to travel with personal cash and/or other payment methods.
- Travelers will be responsible for transportation to and from U.S. Airport.
- Travelers are responsible for their personal luggage payment.
- It is recommended that each traveler keep a photocopy of his or her passport.





The Jeremy Winston Chorale

## **QUESTIONS**

Contact: Angelique Winston  
(443) 864-7840  
[myjorandjo@gmail.com](mailto:myjorandjo@gmail.com)

Jeremy Winston  
(937) 532-3260  
[jeremywinstonchorale@gmail.com](mailto:jeremywinstonchorale@gmail.com)

Payment is non-refundable. Each traveler is encouraged to travel with one or more persons throughout the duration of the trip. If a traveler decides to travel alone, he or she may room with another registered traveler.